

# A large-scale study of **Contributor Engagement in Humanitarian Mapping**

Martin Dittus · ICRI Cities, UCL · @dekstop  
2 May 2015



# Contributor Engagement in Humanitarian Mapping

- We're coordinating **thousands of volunteers**, many without prior OSM experience.
- **How well does this work?**  
How long do people stick around?
- **How important is newcomer training?**  
Do OSM newcomers drop out more quickly than expert mappers?

# ***Engagement*** has many aspects.

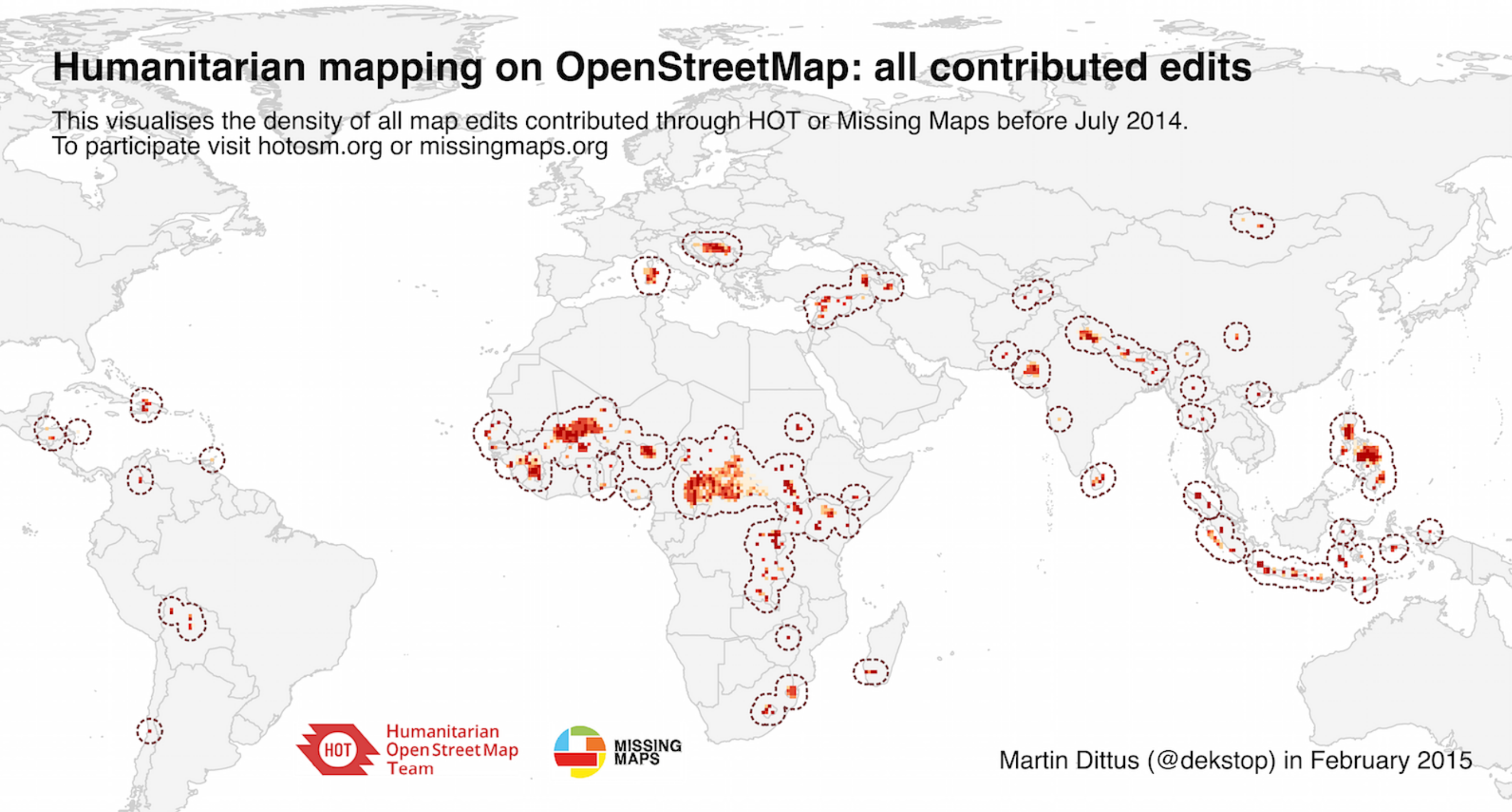
- I'm using **quantitative measures** such as...
  - map contributions (“edits”)
  - labour hours
  - number of days with contributions
- These are easy for me to produce across a wide range of projects.

# Data sources (in late March 2015)

- **Projects and participants: HOT Tasking Manager**
  - ~800 publicly visible HOT projects
  - ~5,000 registered contributors
- **Match with OSM edit history** (user, time, location)
  - ~680 projects with map edits
  - ~4,700 contributors found in the edit history
  - ~52M map edits attributable to HOT

# Humanitarian mapping on OpenStreetMap: all contributed edits

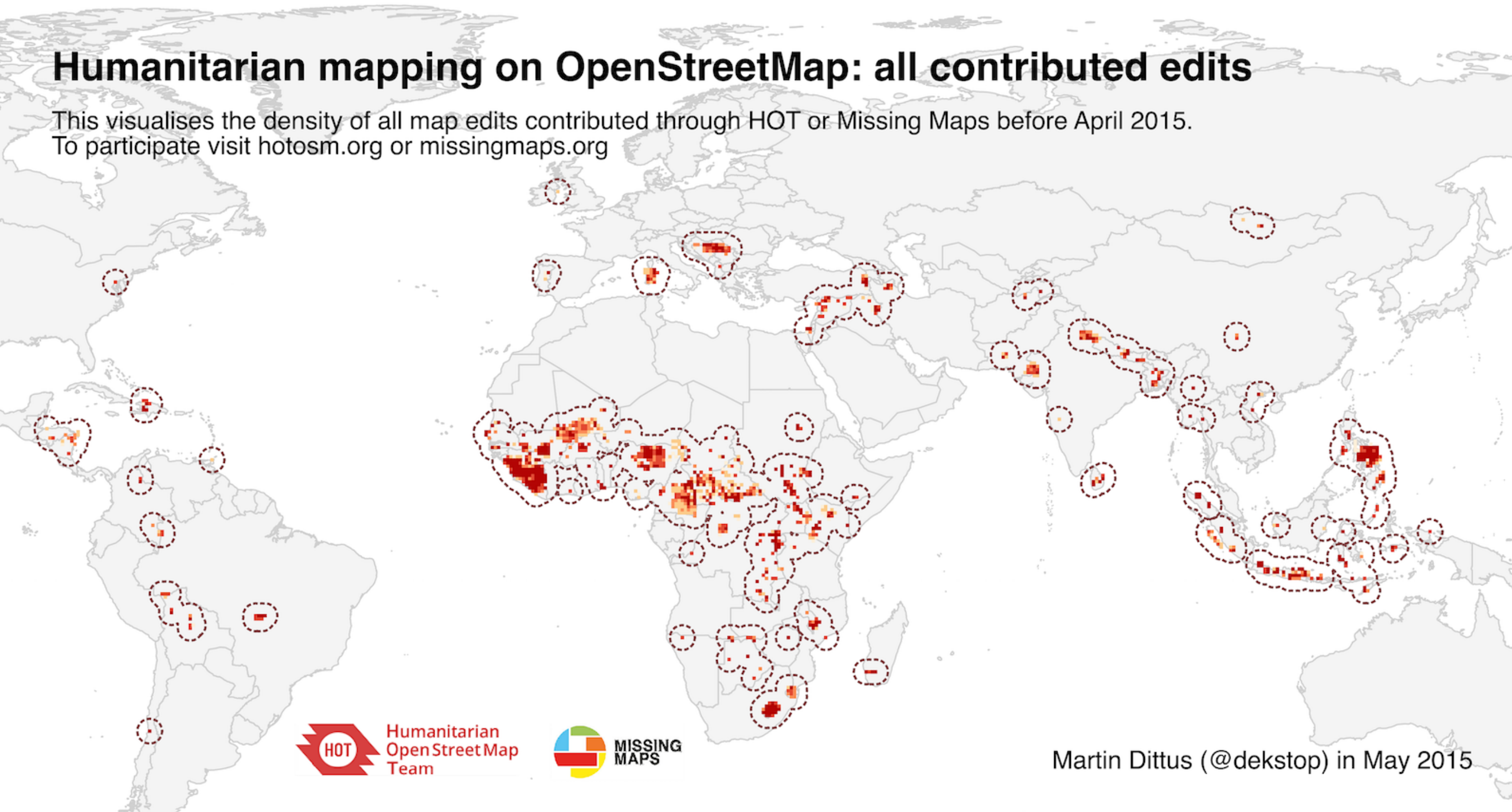
This visualises the density of all map edits contributed through HOT or Missing Maps before July 2014.  
To participate visit [hotosm.org](http://hotosm.org) or [missingmaps.org](http://missingmaps.org)



Martin Dittus (@dekstop) in February 2015

# Humanitarian mapping on OpenStreetMap: all contributed edits

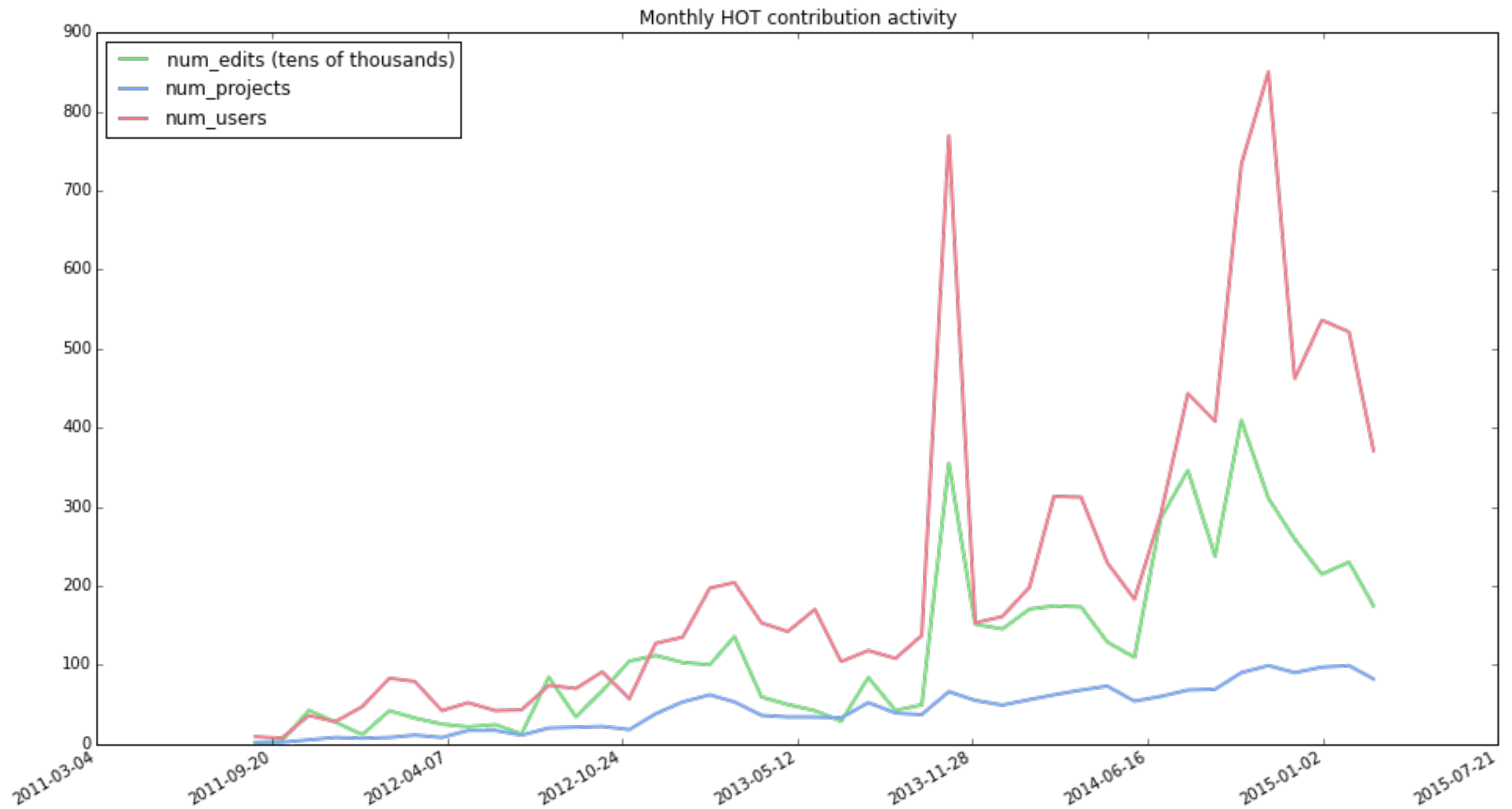
This visualises the density of all map edits contributed through HOT or Missing Maps before April 2015.  
To participate visit [hotosm.org](http://hotosm.org) or [missingmaps.org](http://missingmaps.org)



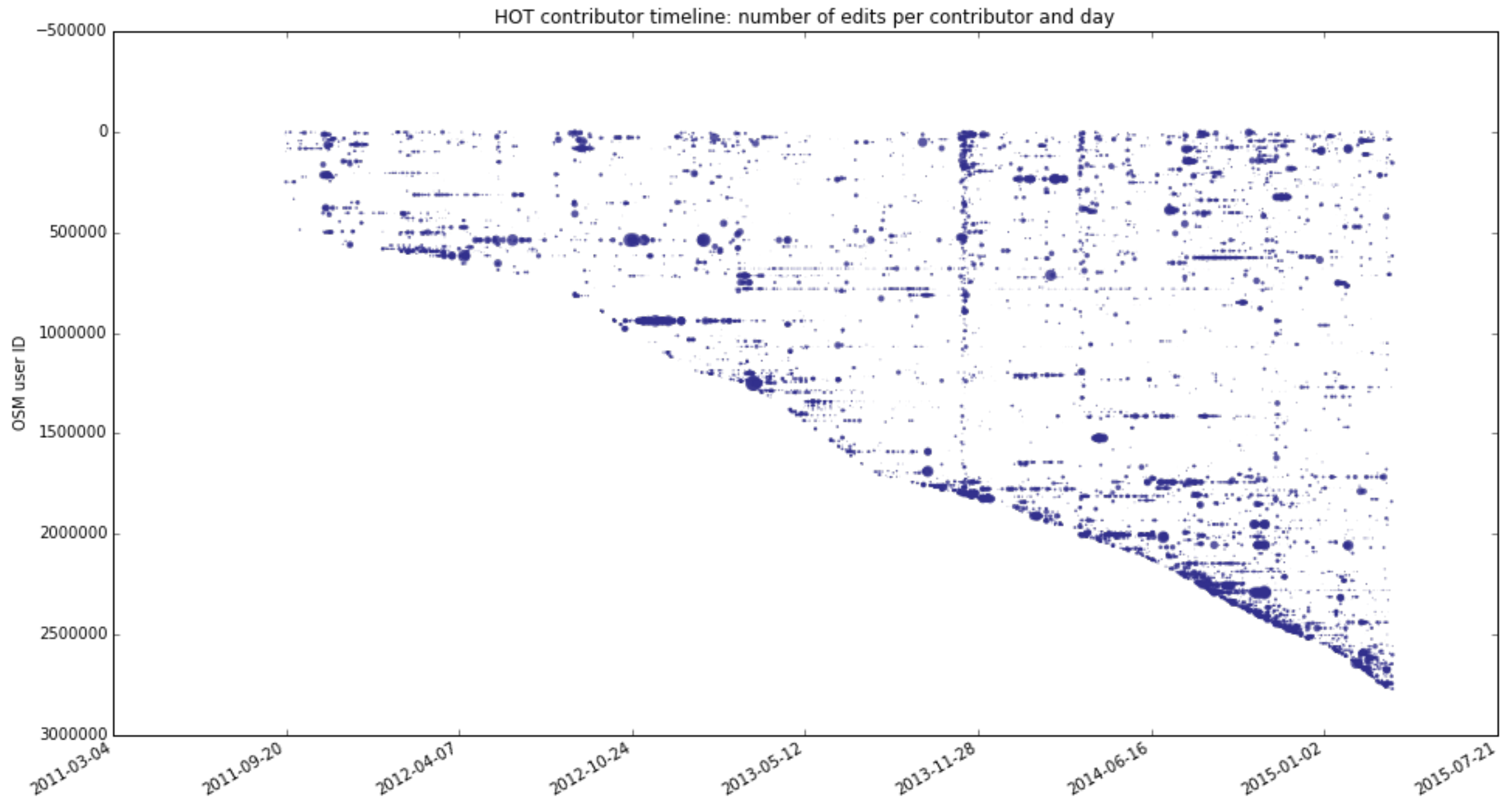
Martin Dittus (@dekstop) in May 2015



# Monthly contribution activity

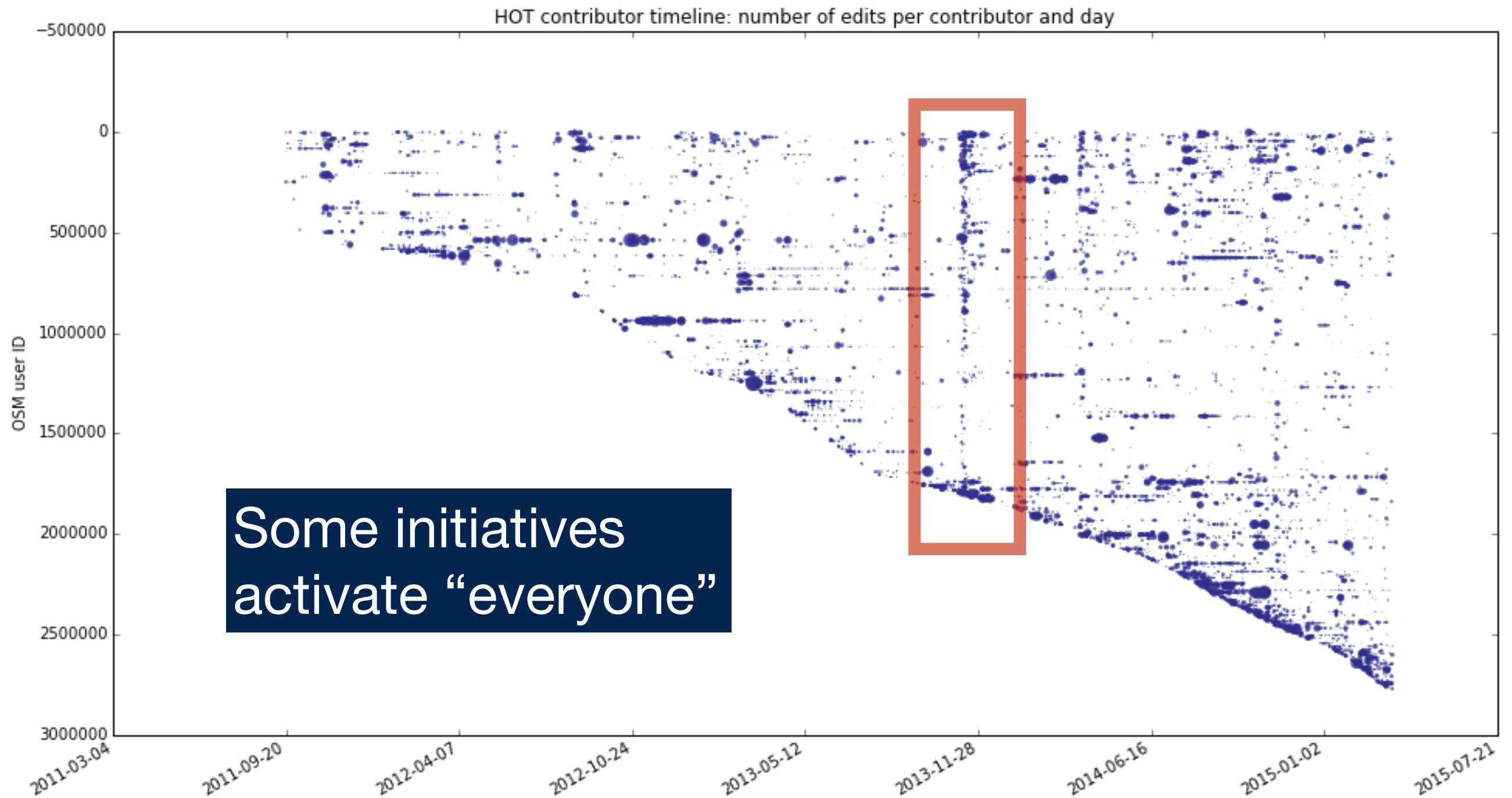


# HOT contributor activity trails





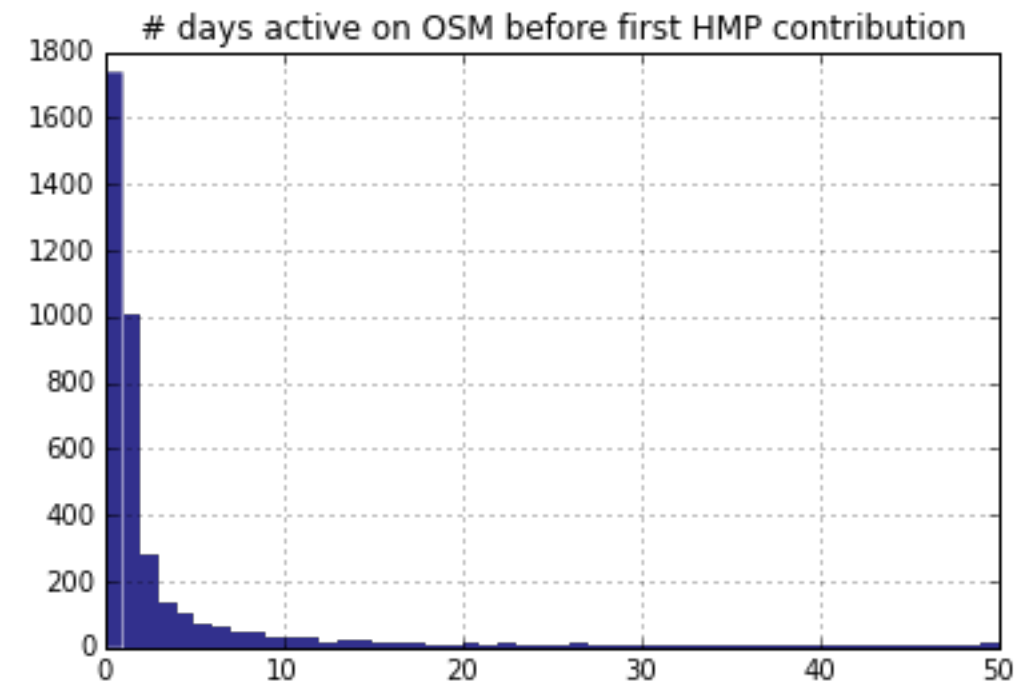
# HOT contributor activity trails



# How much OSM experience do first-time contributors tend to have?

Among all first-time contributors...

- 70% have less than 7 days of OSM experience
- For 35% the first HOT edit is also the first OSM edit



**Most contributors are newcomers to OSM!**

# How long do first-time contributors remain active?

Across their entire activity period...

- **50% work for at least 2 hours total**
- 20% work for at least 9 hours total
- The top 5% work for 50 hours or more!

And...

- **35% contribute to a second project**
- The top 5% contribute to 7 projects or more!

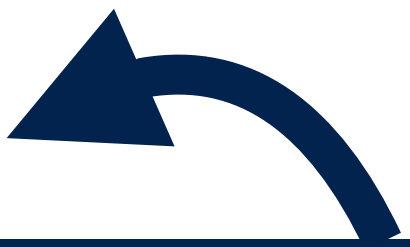
# How long do first-time contributors remain active?

Across their entire activity period...

- **50% work for at least 2 hours total**

- 20% work for at least 9

- The top 5% work for 50

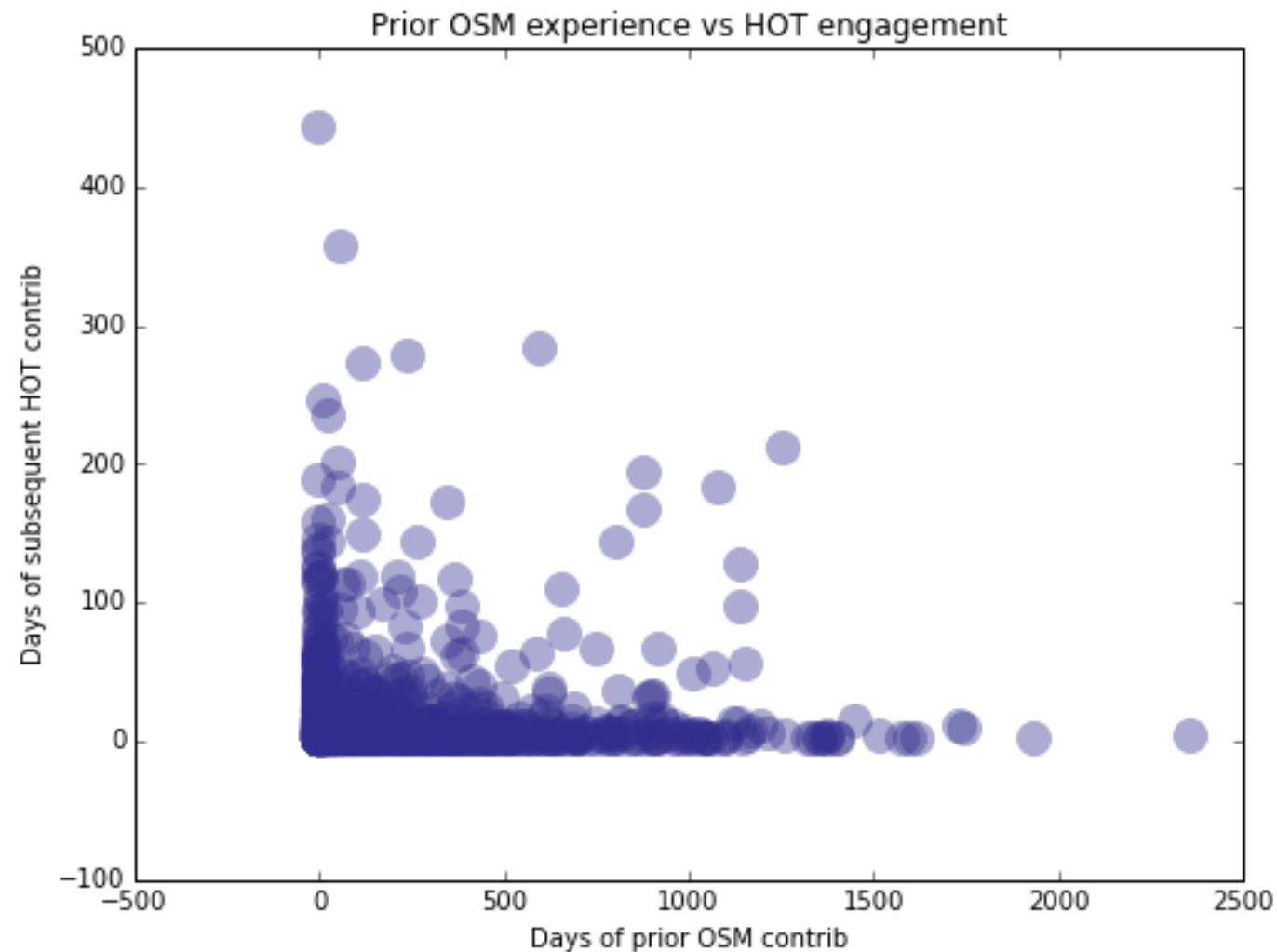


May sound small for a volunteer org. For an online community it's massive!

And...

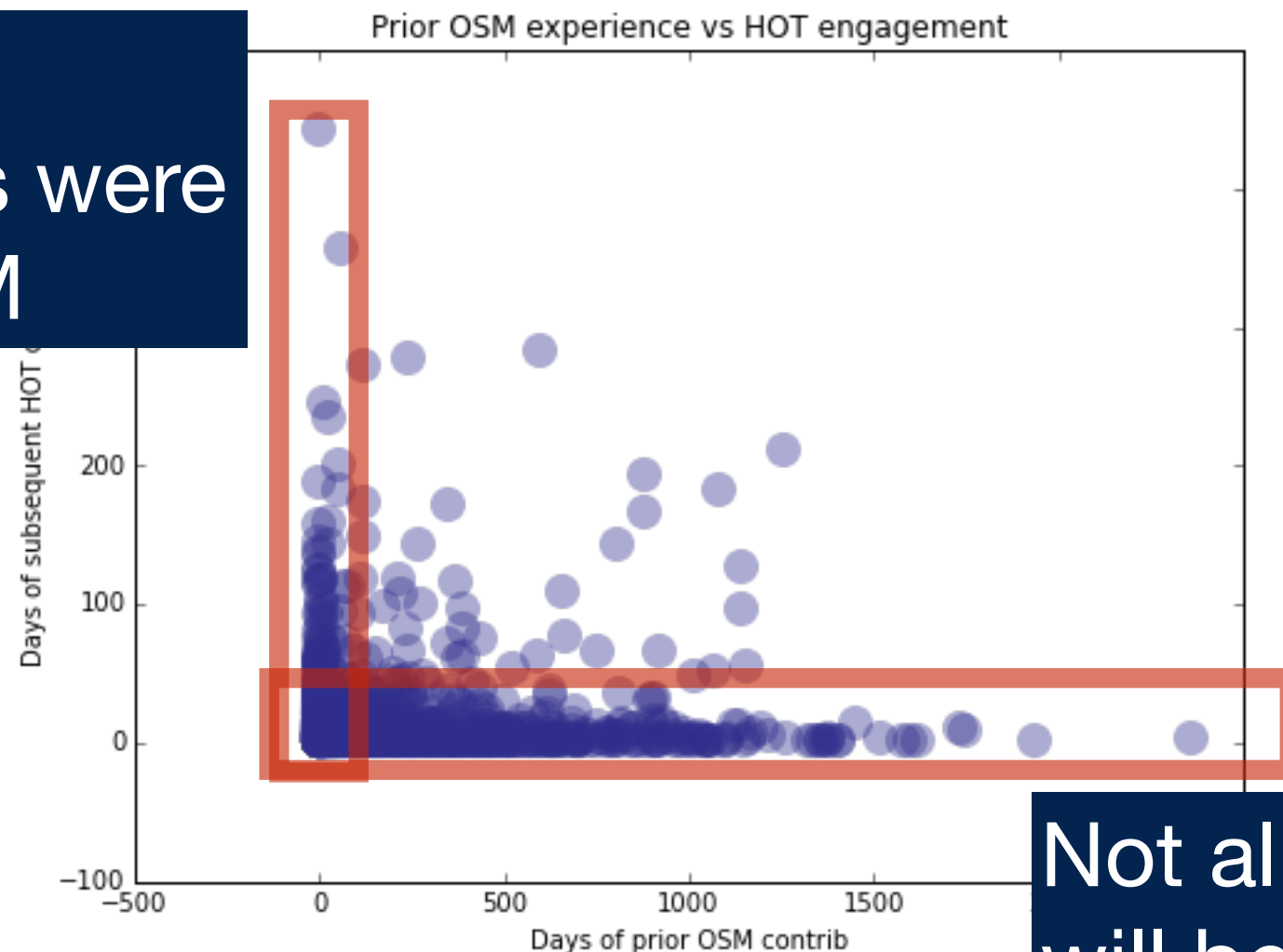
- **35% contribute to a second project**
- The top 5% contribute to 7 projects or more!

# Do OSM newcomers drop out more quickly than expert mappers?



# Do OSM newcomers drop out more quickly than expert mappers?

Many key contributors were new to OSM

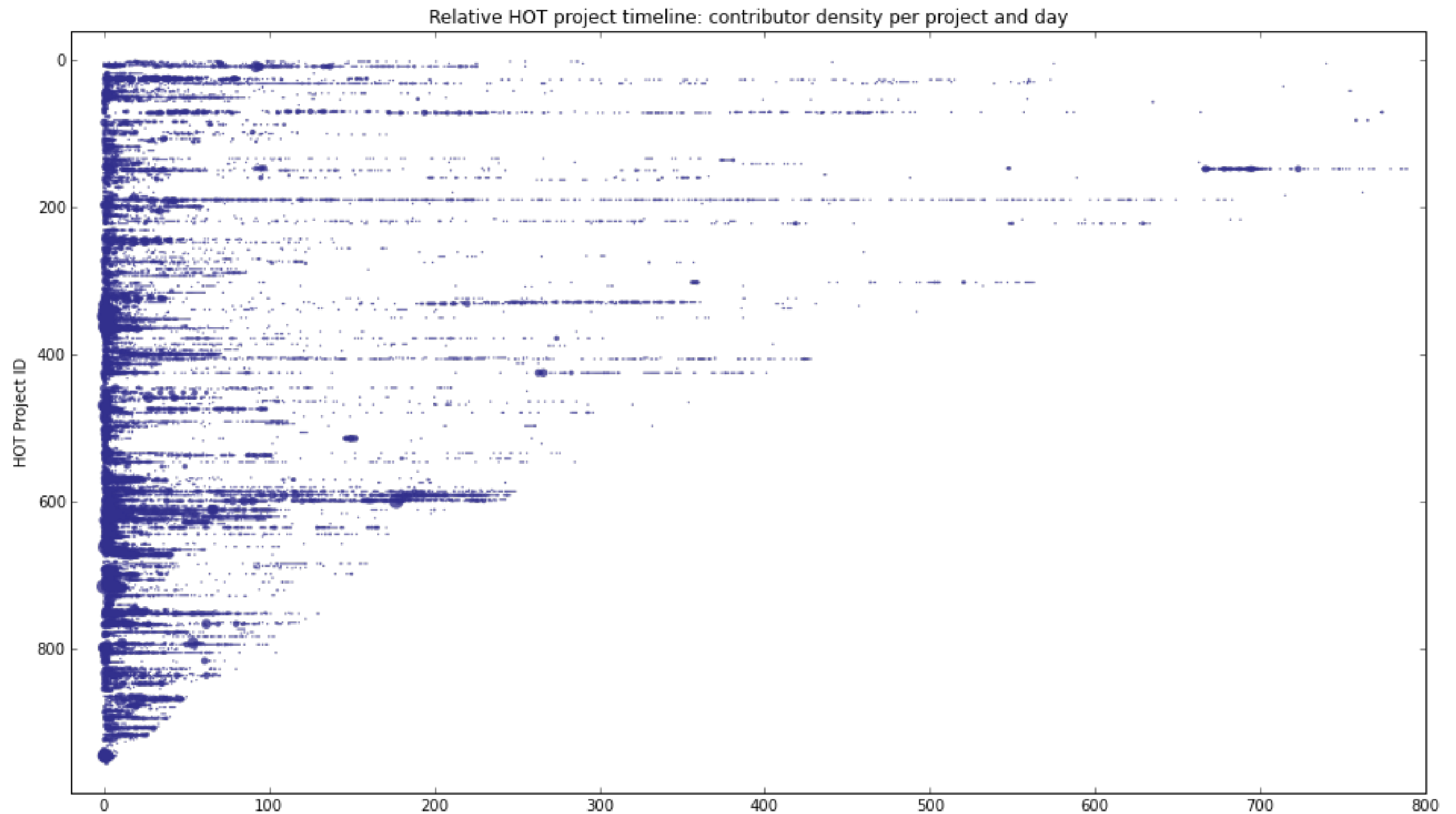


Not all OSM experts will become highly engaged in HOT

Apparently quite the opposite!

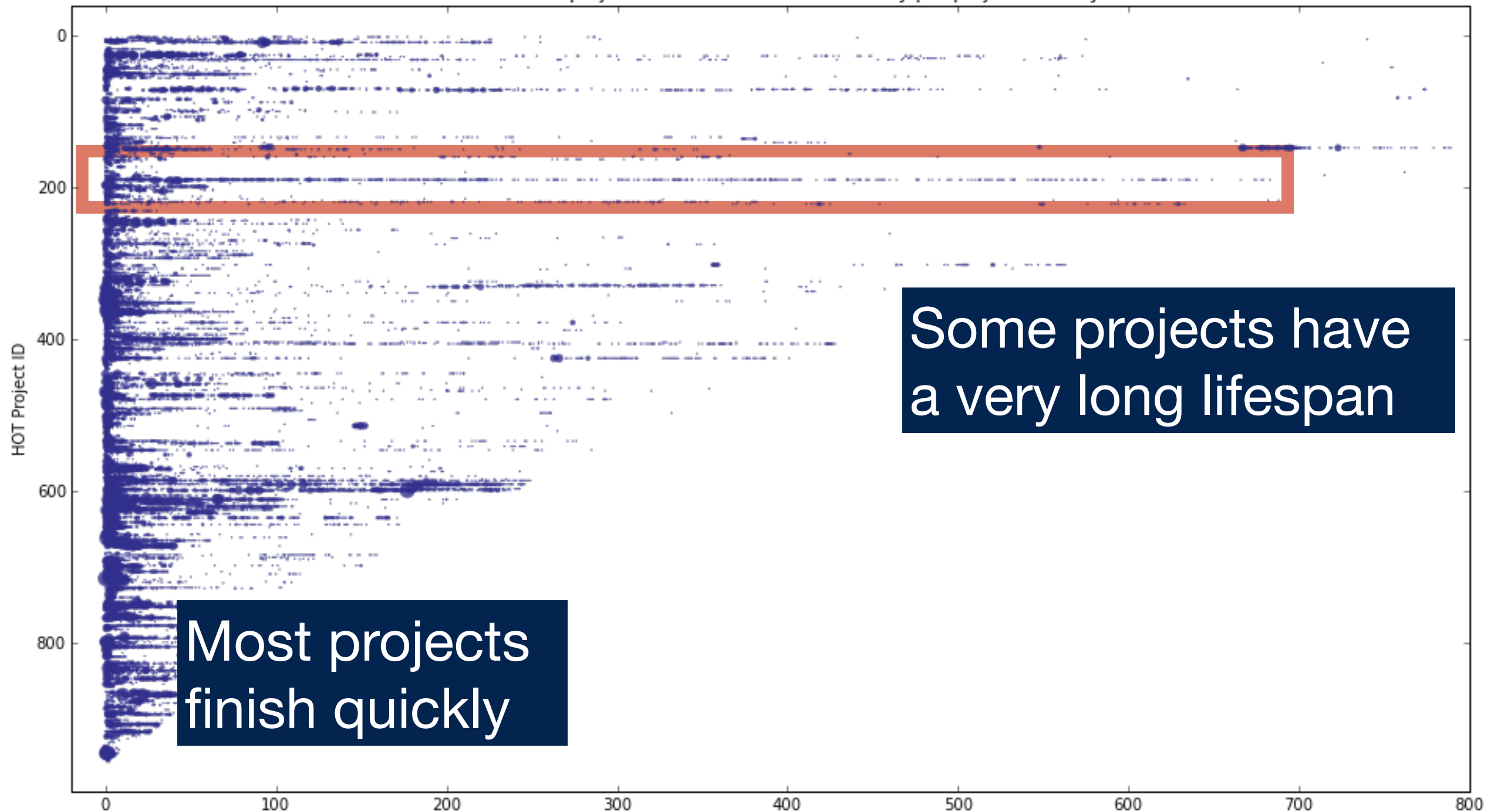


# HOT project activity trails



# HOT project activity trails

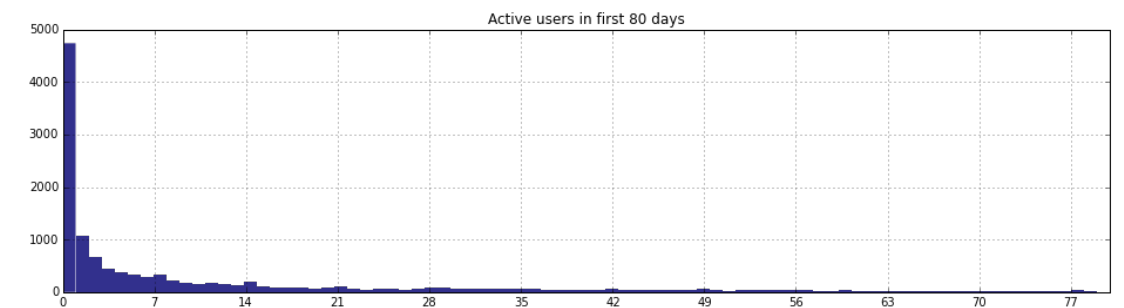
Relative HOT project timeline: contributor density per project and day



# Projects are active for longer than contributors...

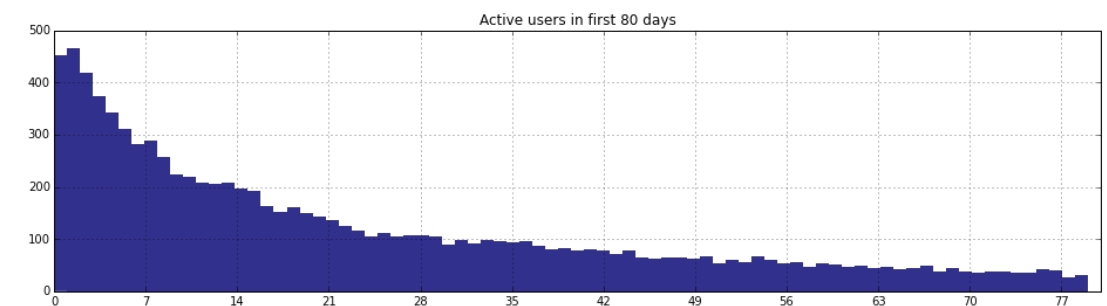
## Contributors

Median activity period: 20 hours  
30% are active for >14 days



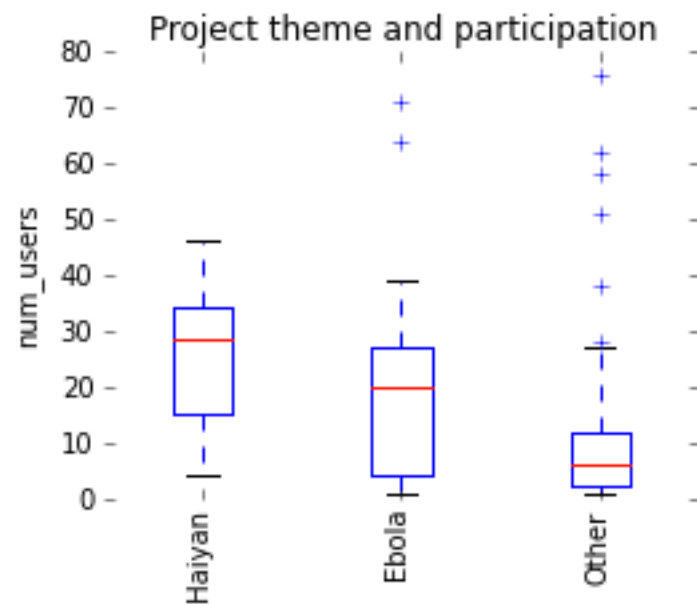
## Projects

Median activity period: 140 days  
75% are active for >14 days

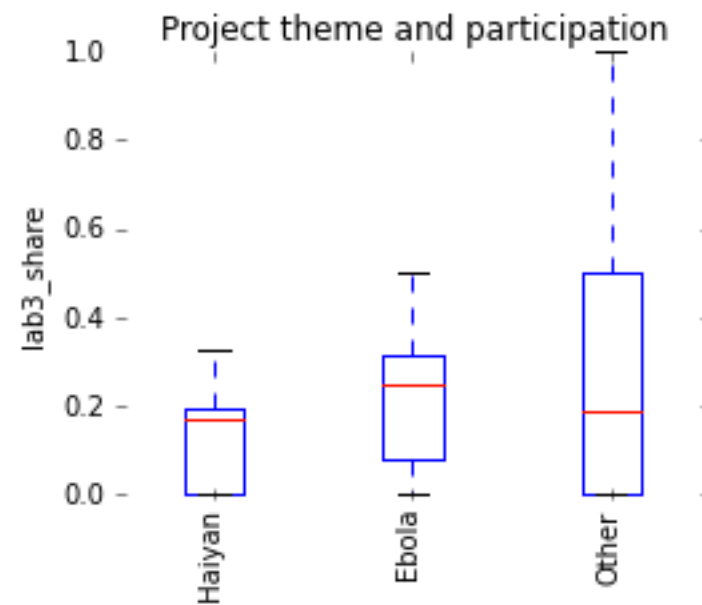


In other words, a steady flow of new contributors is extending project lifetimes!

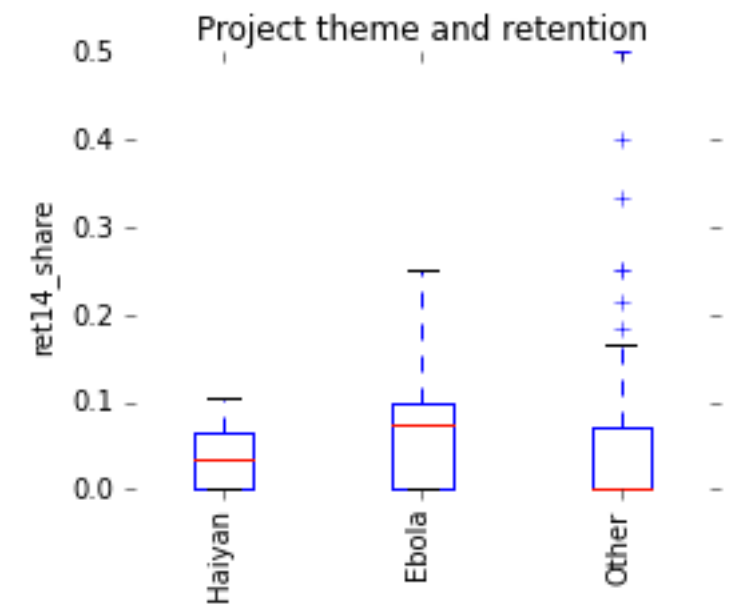
# Different outcomes across different project purposes: typhoon Haiyan vs Ebola response



Haiyan-related projects tended to have more participants



Yet contributors on Ebola-related projects work for more hours...



... and tend to stick around for longer.

# In closing...

- **Be mindful that you're mostly dealing with OSM newcomers**
  - Many highly prolific HOT contributors started out that way
- Extending project lifespans: **burning through volunteers, or building community?**
  - There's a seemingly infinite supply of volunteers...
  - Are we happy with a 2h/contributor average?
  - Ebola response also shows: mapping parties and sustained promotion can increase retention

(If there's time)

**What I'd really like to do...**



# Thank you.